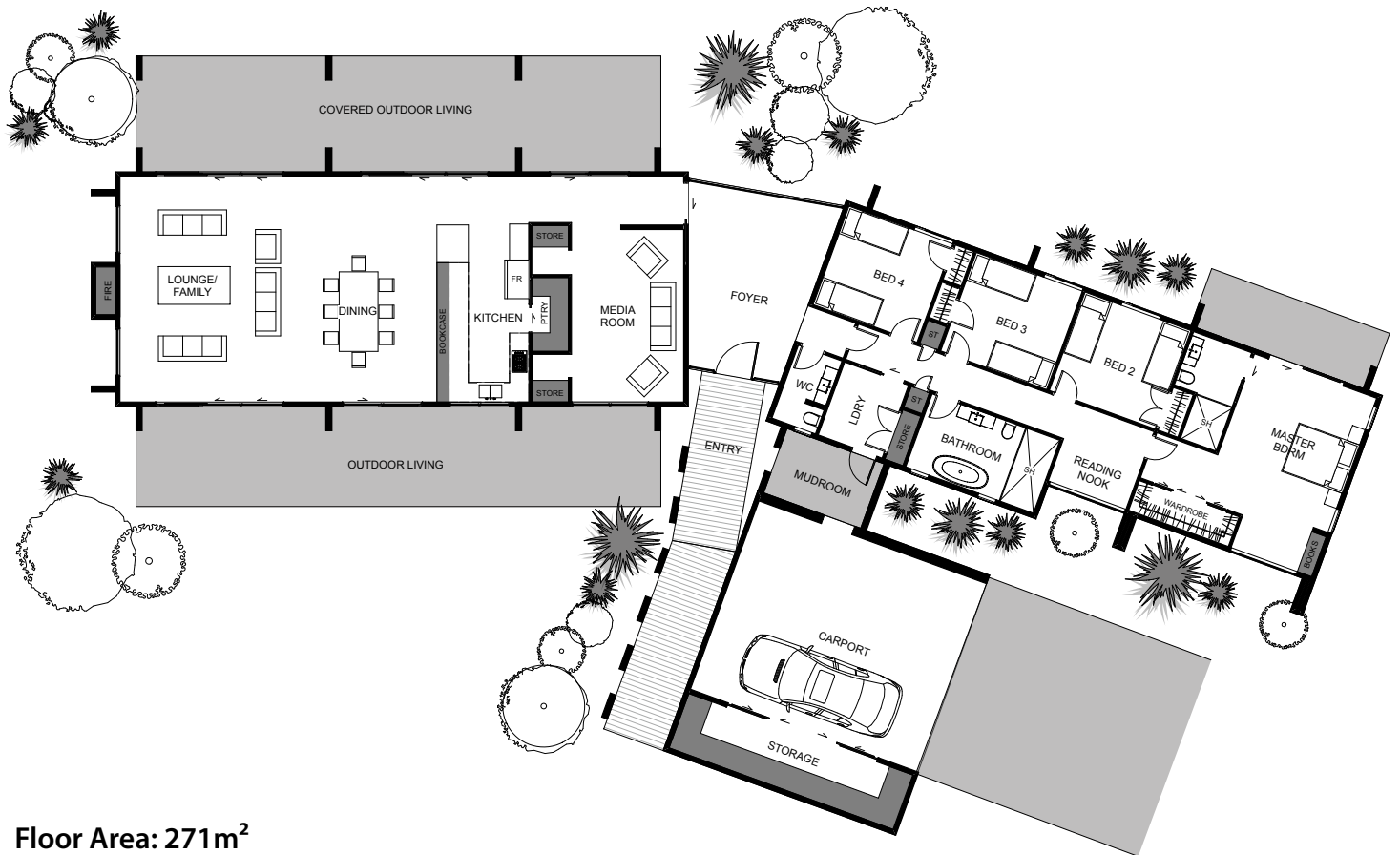




The Cashel is a great entertainers home with well positioned living spaces and bedrooms that deliver comfort and style. The living and bedrooms are split between an outstanding foyer into two private wings. The main living space enchants the eye and delivers your family and friends the lifestyle you have always dreamed of living. With plenty of light from the large windows and doors that lead to outdoor entertainment on both the north and southern sides of the living area. This home delivers many ways of practical, affordable and exciting family living.



Floor Area: 271m²

 0-2
  4
  2
  39.9m
  18.6m

Contact Lee Baillie:
 Ph: 021 886 360
 E: lee@bclhomes.co.nz
www.bclhomes.co.nz

