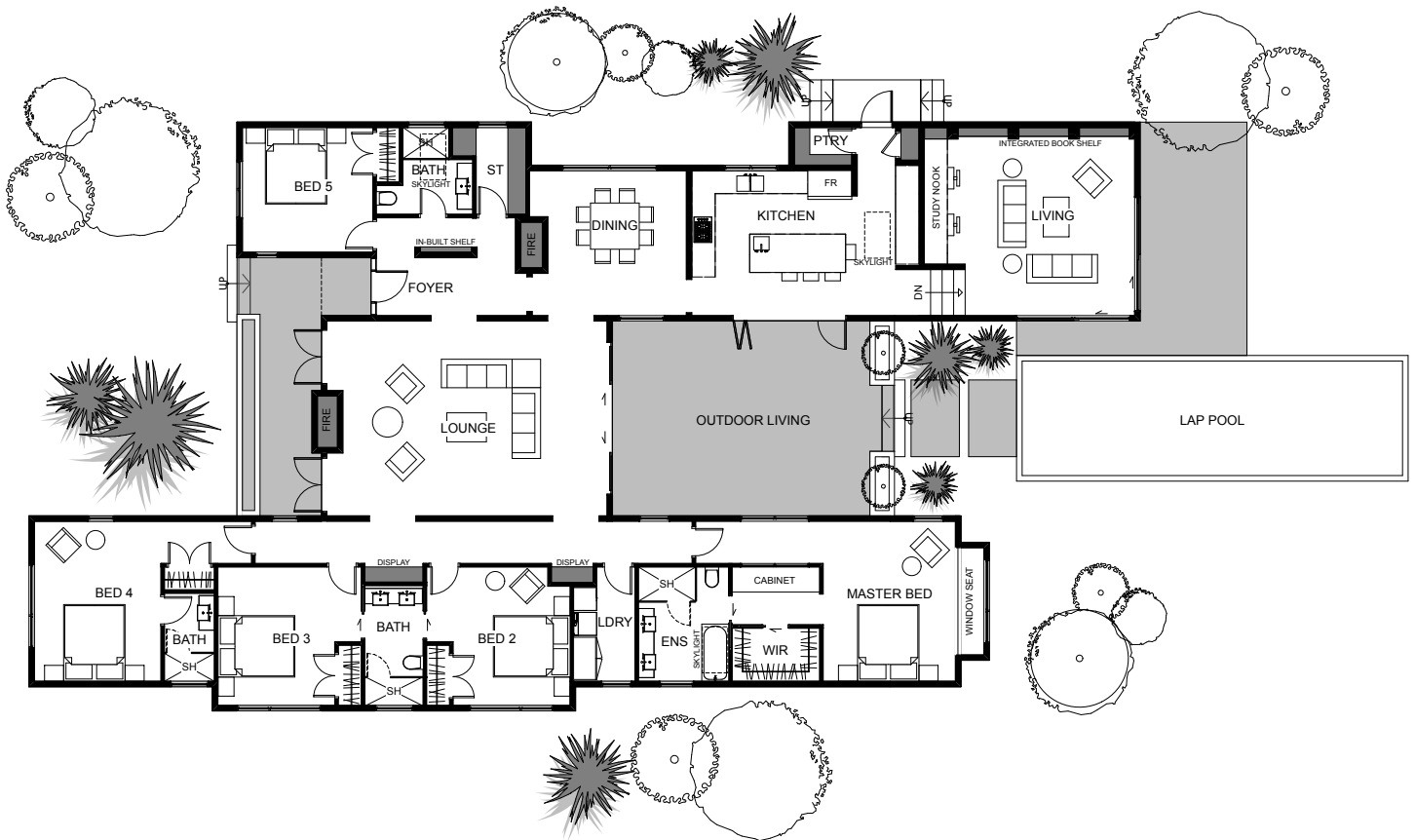




The Marbella is a truly lovely single story home that provides space and amenities for any lifestyle while also giving maximum living flexibility. The kitchen, lounge and master bedroom all overlook a beautiful central outdoor living hub. The master bedroom has an impressive ensuite with walk-in wardrobe, and the addition of a formal living area adds a touch of class to this home. This home is designed to support a modern, relaxed family lifestyle. Perfect home for a growing family.



Floor Area: 264m²

 0-2
  4
  3
  28.9m
  15.3m

Contact Lee Baillie:
 Ph: 021 886 360
 E: lee@bclhomes.co.nz
www.bclhomes.co.nz

